

MEMORABILIA

"MINNESSKRIFT"

of the
INTERNATIONAL ORDER OF RUNEBERG
1898-1968

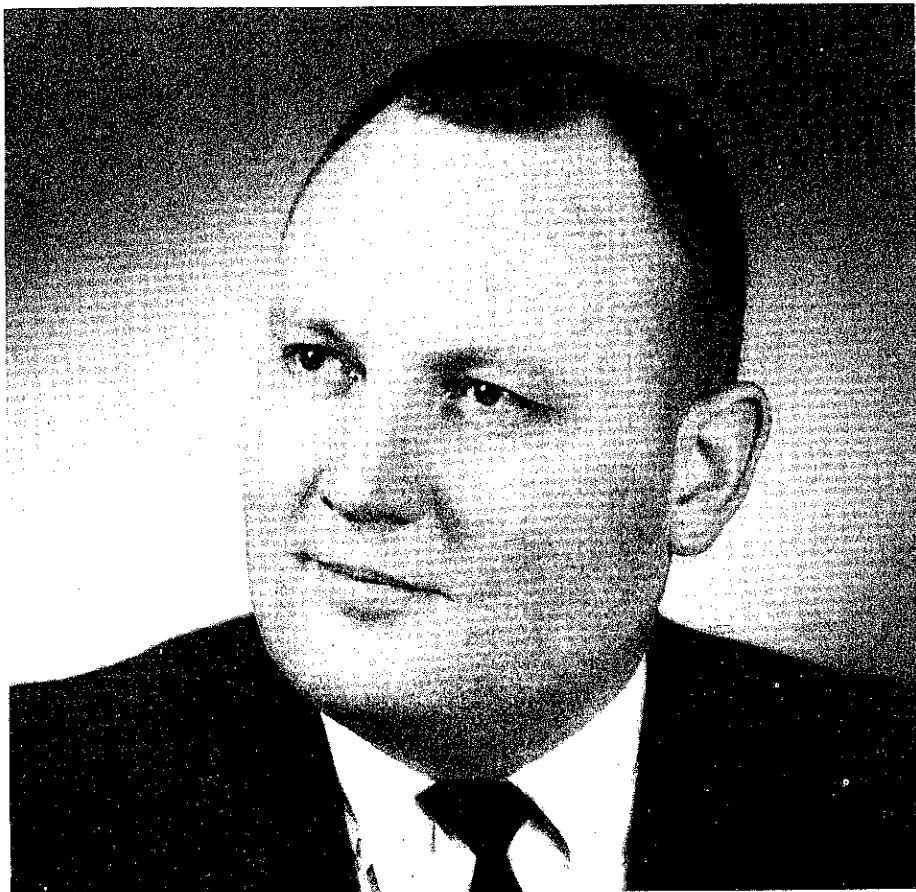
In Words and Pictures

Seventy Years of
Social and Cultural Developments

Anders M. Myhrman, Editor

Published by the International
Order of Runeberg

Roy W. Koping
Elected
President
of the
International
Order of Runeberg
at Convention
In Dollar Bay
in August
1966



INTERNATIONAL ORDER OF RUNEBERG

2

DEDICATION

THIS VOLUME OF MEMORABILIA OF THE INTERNATIONAL ORDER OF RUNEBERG IS DEDICATED TO THE MEMORY OF OUR FOREFATHERS WHO LABORED SO EARNESTLY IN THE SERVICE OF THEIR FELLOW MEN AND FOR THE BENEFIT OF ALL HUMANITY.

FOREWORD

SEVENTY years have passed since the first benefit and temperance societies were organized among the Finland-Swedish immigrants in the mining towns of northern Michigan. These societies joined respectively in a Benefit and a Temperance Association, and these merged in 1920 under the name Order of Runeberg. In 1917, when the federal prohibition amendment was in the offing, the Temperance Association published a *Minnesskrift*. This was a memorial to the beneficent work done by this association and by the thousands of persons who were then, or had earlier been, active in some eighty local societies.

This volume of *Memorabilia*, now published on the seventieth anniversary of the first societies and half a century after the *Minnesskrift*, will present in the first part a general historical sketch of the two associations and the Order of Runeberg. Emphasized in this sketch are the changes and developments that have come with the passing of time, especially the choral tours which have become so significant in the contacts of the International Order of Runeberg with the Swedes in Finland. In the second or main part of the volume each lodge will be represented by a brief history, names of the officers of the lodge, a membership roster, and in most

cases representative photos. A brief epilog contains some thoughts and ideas of a few leaders in the Order with respect to its importance and future.

Memorabilia, according to the dictionary, are things and events worthy of remembrance and record. And of these, notice will be taken in the following pages. But in the history of this Order and its forerunners we are conscious not only of things and events worthy of remembrance but also of persons. These organizations were founded and nurtured by common immigrants who thereby tried to raise and secure their lives on a level above and beyond the hard struggle for their daily bread. These immigrants were almost entirely men and women without much education. But among them there were persons with initiative and leadership ability; and these persons, out of concern for and with the support of their fellowmen, brought into being and fostered the organizations we are here concerned with. These men and women, both leaders and followers, are worthy of our remembrance. Other persons, men and women of a younger generation, have in many places taken over and are now carrying on in somewhat different ways the work of the founders. On them and their devotion and efforts will depend the future of the International Order of Runeberg.

ORIGINS and DEVELOPMENT of the International Order of Runeberg

THE PEOPLE WHO STARTED IT —

The International Order of Runeberg has a Finlandic background. It is named after Finland's greatest Swedish poet, Johan Ludvig Runeberg; and the people who founded it were Swedish-speaking immigrants from Finland. During the period 1880-1940 about 70,000 of these people arrived in the United States and Canada, mostly from the provinces of Österbotten and the Åland Islands. But due to the large number of returnees and to deaths, only about one-half that number lived in North America at any one time. They settled mostly on the East Coast, in the Central States south of the Great Lakes, and on the West Coast. At first they also were called Finns, then Swedish-speaking Finns and Swede-Finns, and finally Finland-Swedes. These immigrants founded two associations which after a time united and adopted the name Order of Runeberg.

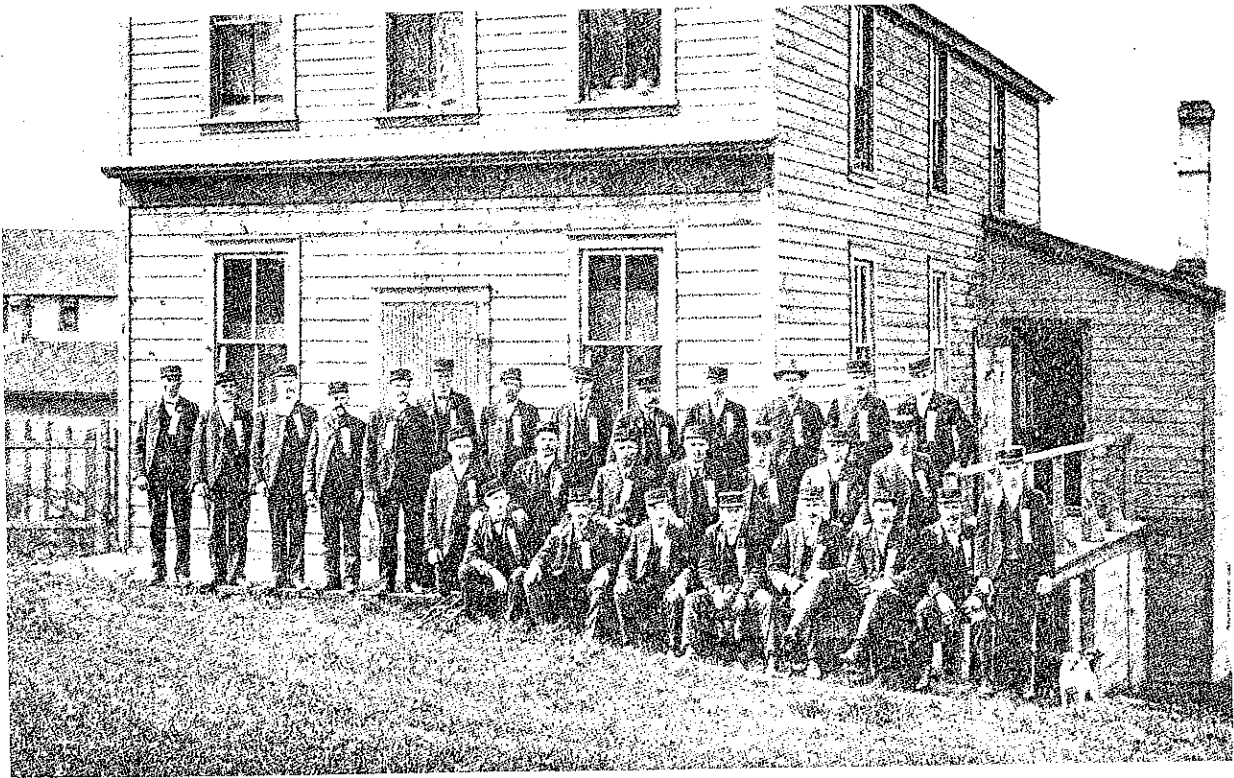
THE BENEFIT ASSOCIATION —

The first societies among these immigrants were founded in Worcester, Mass.: the benefit society Imatra in 1889 and the temperance society Aavasaksa in 1892. But it was the founding of the benefit society Österbotten in Bessemer, Mich., in 1898 and the temperance society Morgonstjärnan in Ironwood, in the same state and year, that

initiated a movement to form not only new local societies but also associations of societies. These societies in Bessemer and Ironwood became No. 1 in their respective associations. The year of their founding is therefore our starting point.

In the following year benefit societies were founded in Ironwood, Negaunee, and Crystal Falls. Representatives from the four societies in Michigan met in Bessemer, February 5, 1900, and organized the Benefit Association (Svensk-Finska Sjukhjälpförbundet). This association grew rather slowly for a few years, but later its progress was quite rapid. In 1915 there were 38 local societies with 2,237 members, and in 1920 the membership of 51 active local societies was about 3,500. Of these 51 societies 5 were located in the East, 28 in the Central States, 6 in the Mountain States, and 11 on the West Coast.

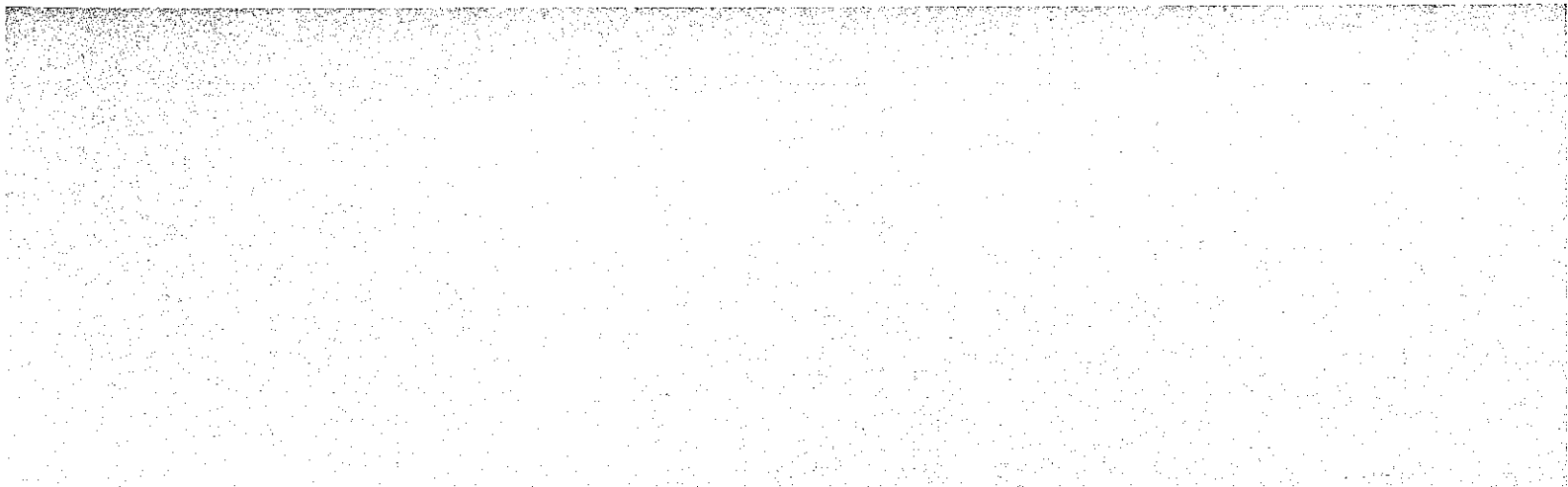
The emphasis in the Benefit Association was primarily on aid and benefits for individuals and families in times of illness, accidents or deaths. But social and cultural activities were also important parts of the functions of the local societies. The sum total of benefits paid by these societies to their members before 1920 is not definitely known, but estimates place it above \$200,000. Three persons were outstanding leaders in the association: John Beck in Baraga, president 15 years; Andrew Ostrand in



BENEFIT SOCIETY "ÖSTERBOTTEN", NO. 1 IN BENEFIT ASSOCIATION, ORGANIZED IN BESSEMER, MICH., ON FEBRUARY 5, 1898.



CONVENTION OF THE BENEFIT ASSOCIATION IN BUTTE, MONT., AUGUST, 1919.



Crystal Falls, treasurer 12 years; and John S. Back in Escanaba, secretary 11 years — all in Michigan. At the same time these men were active also in the Temperance Association and later in the Order of Runeberg.

Presidents: John Backels 1900-1903; John Beck 1903-1906, 1909-1919; August Isaacson 1906-1907; John S. Back 1907-1909; John Forsman 1919-1920.

Vice presidents (in succession); Matt Strand, John Steve, Charles Nyman, John S. Back, Jacob Olson, Charles Franzen, Edward Udd, Charles Green, John Backels, Otto Kortell, John A. Forsman, Alfred Gustafson.

Secretaries: Oscar Nordling 1900-1901, John Lillrose 1901-1906, John Beck 1906-1909, John S. Back 1909-1920.

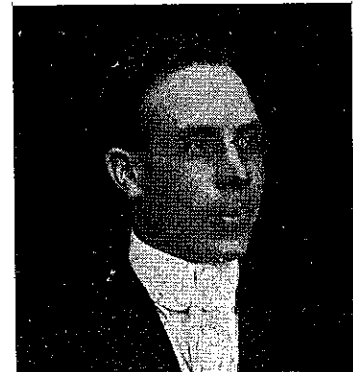
Treasurers: John Thors 1900-1901, John Nyman 1902-1904, Matt Strand 1904-1906, John Ostman 1906-1907, William Green 1907-1908, Andrew Ostrand 1908-1920.



JOHN S. BACK



JOHN BECK



ANDREW OSTRAND

THE TEMPERANCE ASSOCIATION —

After the founding of Morgonstjärnan in Ironwood in 1898 the idea of temperance gradually took hold. Within four years 15 societies were organized, the majority in northern Michigan and in a number of cases in towns or cities where benefit societies also were being organized. These temperance societies first joined the Finnish National Brotherhood, but on November 20-21, 1902, representatives from 11 of these societies met in Crystal Falls, Mich., and organized the Temperance Association (Svensk-Finska Nykternetsförbundet). This association started with 16 societies and about 500 members. It grew quite rapidly during the next few years. In 1908 there were 51 active local societies with about 2,100 members. After that, progress was somewhat slower. At the end of the year 1916 there were 60 societies with a membership of about 2,600. Of these 60 societies 8 were located in the East, 31 in the Central States, 7 in the Mountain States, and 14 on the West Coast. The membership decreased slightly before 1920.

Most of the work of the temperance societies was of an educational nature. There were meetings with informative and entertaining programs and social activities to promote temperance. For these programs and activities a meeting place was necessary, and many of the societies therefore built their own halls, especially those in the Central States. Women's auxiliaries (sewing societies) were almost invariably formed to aid financially. In connection with many of the temperance societies choirs and

brass bands were also formed. Some of these lasted only a short time but a few were active for many years.

The Temperance Association sponsored three publications of enduring value. The first was the monthly paper *Ledstjärnan* (Leading Star), beginning in January 1906 and inherited by the Order of Runeberg in 1920. The second was a history of the Association and its lodges in a de luxe 12 by 9 format, which was published in 1908, when the membership was still growing rapidly. The title of the volume in Swedish was, "Svensk-Finska Nyterhets-Förbundet af Amerika i Ord och Bild". It was edited by Thomas Stenius, who was then a student at North Park College near Chicago. The third was *Minneskrift 1902-1917* which contains the name and birthplace of nearly all members of the 60 temperance societies. The editor was principally John Berg, the secretary of the Association.



THOMAS STENIUS.



FIRST GOVERNING BOARD OF TEMPERANCE ASSOCIATION

MRS. S. BLOMQUIST, Vice President; AND. EHRSTROM, Secretary; AND. GRANBERG, Treasurer; C. CARLSON, President; A. G. WICKMAN, HERMAN HOLM, VICTOR JACOBSON.



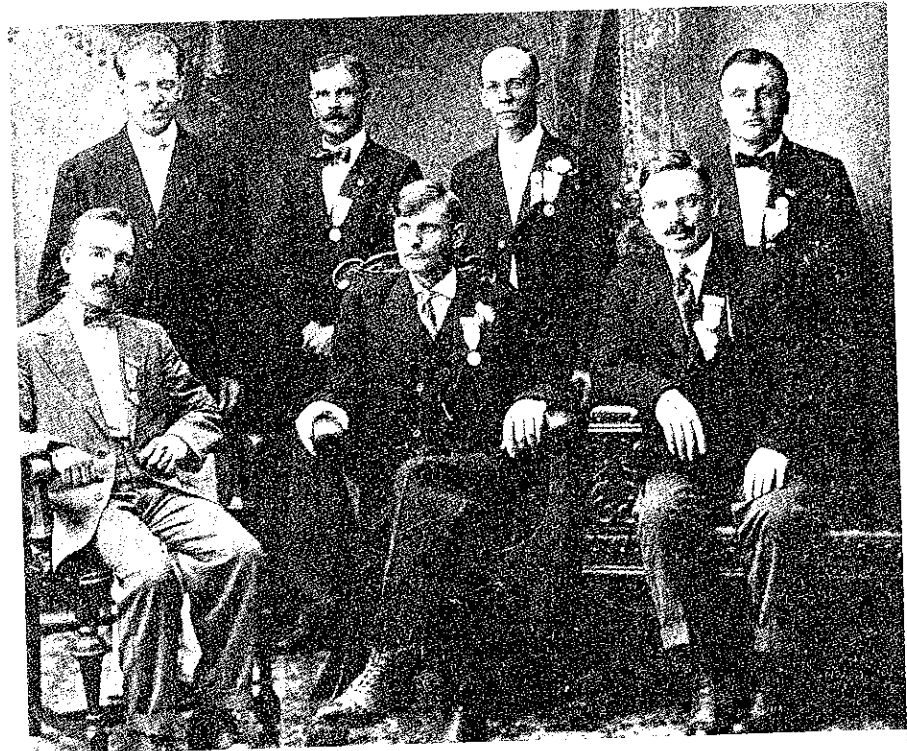
CONVENTION OF THE TEMPERANCE ASSOCIATION IN CHICAGO, ILL., 1912.
MEMBERS OF THE GOVERNING BOARD: FRONT ROW, BEGINNING WITH THE
THIRD PERSON FROM THE LEFT: IRENE BACKMAN, MEMBER; JOHN BERG,
SECRETARY AND EDITOR OF "LEDSTJÄRMAN"; JOHN UDELL, PRESIDENT; J.
VICTOR JACOBSON, PAST PRESIDENT; WILLIAM HOLM, TREASURER.

MEMORABILIA

GOVERNING BOARD OF THE TEMPERANCE ASSOCIATION 1917-1918.



JOHN BERG
Secretary and Editor
1912 - 1916



DR. J. E. DAHLBO B. O. LUNDEN CHAS. SJOBERG V. JACOBSON
V. HERMANSON V. JOHNSON J. E. SMITH



"OSTERBOTTEN" NEGAUNEE, MICH. — HALL BUILT 1906.



Officers of the Temperance Association 1902-1920.

Presidents: Charles Carlson 1902-1903, Herman Holm 1903-1905, John Wickstrom 1905-1906, Carl W. Silverberg 1906-1909, C. O. Smith 1909-1910, J. Victor Jacobson 1910-1912, John Udell 1912-1913, John E. Smith 1915-1917, Verner Johnson 1917-1919, Emil Ekblad 1919-1920.

Vice presidents (in succession): Mrs. Sofia Blomquist, John Udell, Edward Smith, C. O. Smith, J. Victor Jacobson, Alex Koll, Victor Emanuelson, Oscar Anderson, John E. Smith, Carl P. Klockars, William Hermanson, Emil Ekblad.

Secretaries: Andrew Ehrstrom 1902-1903, J. Victor Jacobson 1903-1904, Andrew Ostrand 1904-1907, John Udell 1907-1912, John Berg 1912-1916, John E. Smith 1917-1920.

Editors of "Ledstjärnan" (Leading Star): John Udell, Jan-July 1906, 1909-1912; Andrew Ostrand 1906-1907, Thomas Stenius 1907-1909, John Berg 1912-1916, J. E. Dahlbo, Jan-Sept. 1917; John E. Smith 1917-1920.



JOHN UDELL

THE ORDER OF RONEBERG**THE ASSOCIATIONS UNITE —**

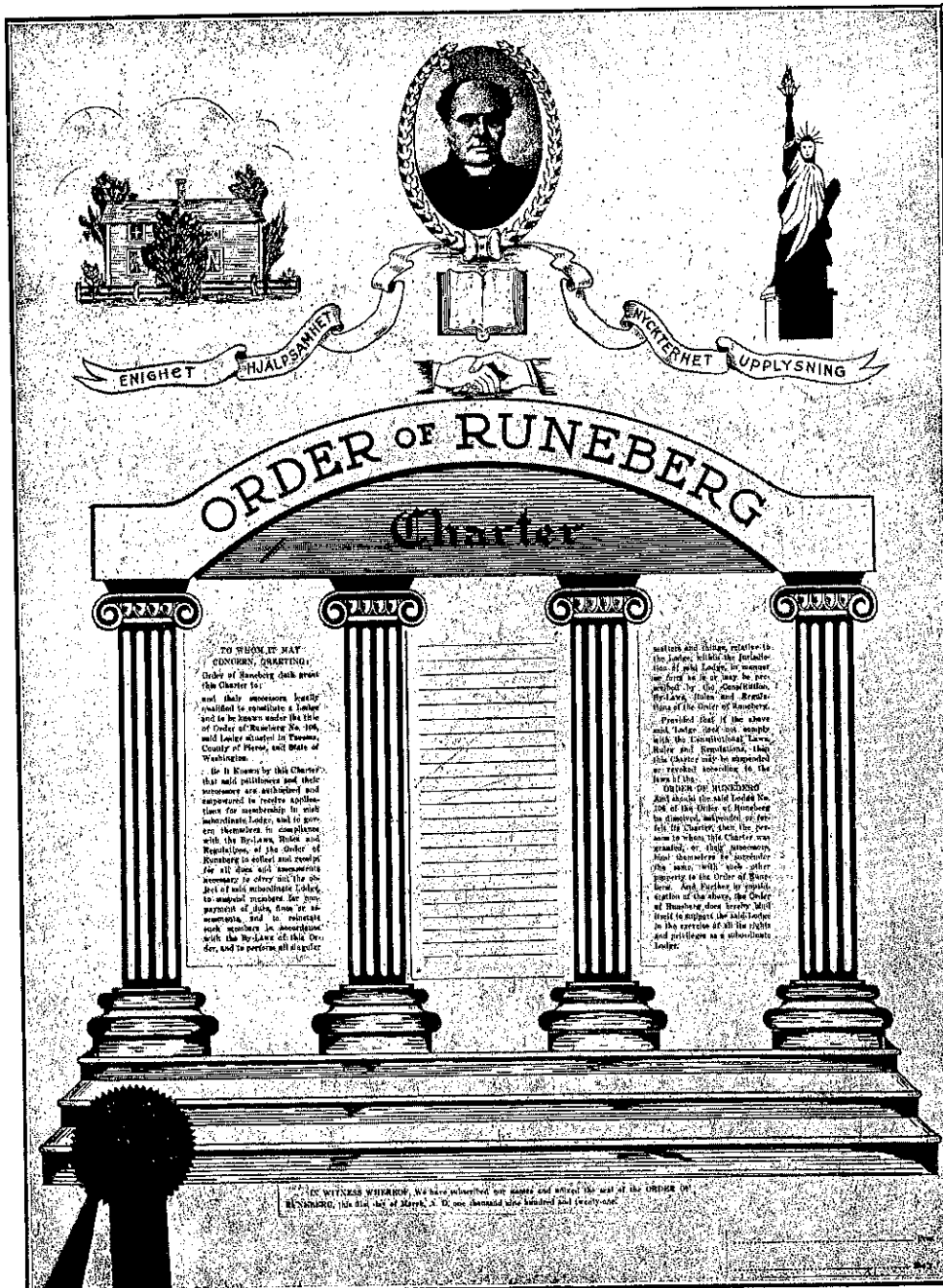
The membership of the Benefit and Temperance Associations overlapped to a considerable extent and a few leading persons served as officers in both associations even at the same time. Under such circumstances the idea of uniting the two national associations naturally arose, and it became more compelling with the prospects of a federal prohibition law. After much discussion and even a referendum the matter came to a head at the annual conventions of delegates from both associations in Waukegan, Ill., August 18-21, 1920. It was then and there decided to merge the two associations with all their assets into a new fraternal order, the name of which was to be Order of Runeberg, in Swedish "Runebergorden". The new Order was to combine the two main functions of the previous associations: the aid and benefit provisions were adopted unchanged, but the temperance requirement was now based on the chief clauses in the federal prohibition law. John A. Forsman of Duluth was elected the first president of the Order of Runeberg. In most places the local societies accepted the decision of the conventions and united as a Runeberg lodge before the end of the year. The Order began to function officially January 1, 1921.

The lodges were grouped geographically in three districts: Eastern, Central and Western. These districts were organized as functional units with their own officers and (as a rule) biennial conventions. One of their main func-

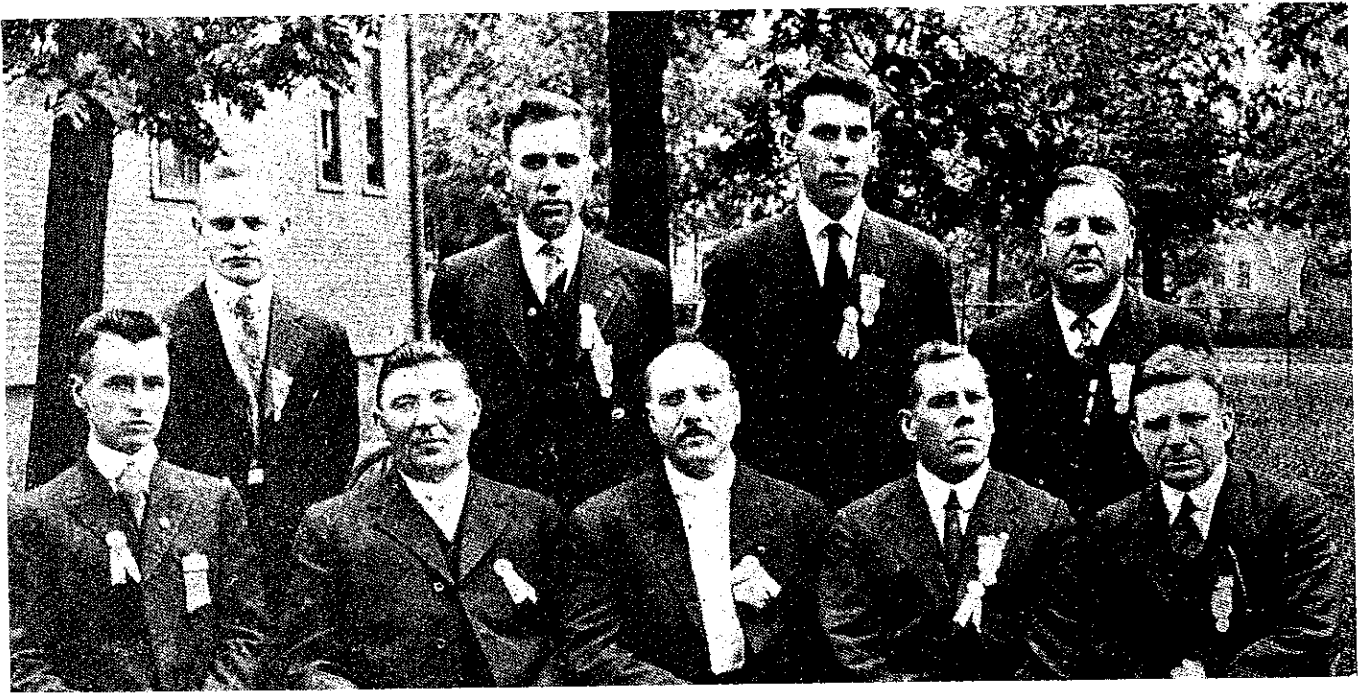
tions has been to discuss and propose changes in the constitution and by-laws of the Order. In the Northwest the lodges also inherited a Circle-organization from the Temperance Association. This Circle No. I has over the years been active in many ways, among them in promoting choral singing and excursions to Finland. In recent years the Circle has annually sponsored a song festival, a bowling tournament and an area picnic. It has thus continued to be a very dynamic factor in the life and functioning of the lodges in the Northwest.

MEMBERSHIP OF THE ORDER —

The Order of Runeberg started with about 4,500 members. Several campaigns for new members were conducted in the twenties and new lodges were also organized. The membership accordingly arose to the high point of 8,500 at midyear 1929. In the Western district 23 lodges with 3,318 members were active, in the Central district 34 lodges with 3,584 members, and in the Eastern district 14 lodges with 1,455 members. Hopes were then high for a still larger membership, but due to the depression in the early thirties it fell to less than 6,400 in 1933, only to rise again to about 7,200 at midyear 1939. Since then it has gradually declined, using midyear data, to about 6,680 in 1950, 5,780 in 1954, 5,490 in 1958, 4,300 in 1962 and 4,100 at the close of 1965. In that last year the membership in the Western district was 2,497, in the Central district 1,103, and in the Eastern district 502. In the Western district the largest lodges were Vancouver



Our Charter



FIRST SUPREME BOARD OF THE ORDER OF RUNEBERG ELECTED AT THE CONVENTION IN WAUKEGAN, ILL., AUGUST 19-20, 1920. FRONT ROW FROM LEFT: CARL V. FRANS, VICE SECRETARY; JOHN S. BACK, SECRETARY; JOHN A. FORSMAN, PRESIDENT; EMIL EKBLAD, VICE PRESIDENT; JOHN E. SMITH, EDITOR OF "LEDSTJÄRNAN". SECOND ROW: WALTER EKHOLM, TRUSTEE; JOHN WARNSTROM, TRUSTEE; JOHN W. EKBLOM, TRUSTEE; J. VICTOR JACOBSON, TREASURER.

with 457 members, Eureka with 331, Seattle with 216, and Portland with 194; in the Central district Dollar Bay had 106, Detroit 95, Chicago 90, and Duluth 86 members; in the Eastern district Worcester led with 141, and Norwood with 134 members.

Several factors have operated in the longtime decline in membership: 1) deaths during the last few decades of older members at an increasing rate; 2) loss of prospective new members by the severe quota restrictions of immigration from Finland to the U. S. since 1925; 3) the failure of most lodges to enlist and hold enough members from the native generation to take the place of the older members. Only to a small extent did the larger immigration to Canada, especially to British Columbia, compensate for the loss to the U. S.

YOUTH AND LANGUAGE —

After the twenties there was an often expressed urgency to enlist the young people as members of the lodges. The real problem, however, was not that of enlisting them but of holding them and getting them engaged in lodge activities. The most successful efforts were made in the Western district through the appointment of active youth leaders, the development of special youth groups and activities, and no doubt also through the early use of English in the lodge meetings. Economic conditions also made a difference. For instance, many of the once relatively prosperous mining towns and cities in Michigan have been declining; and the young people, especially those with high school or more education, have had to

seek employment opportunities in the large cities. This exodus of young people has of course been a heavy loss for the lodges.

The Swedish language was used almost exclusively in the benefit and temperance societies and for some time also in most of the Runeberg lodges. The earliest shift to English occurred in the later twenties and the early thirties in some of the lodges in the Western district. The records of the conventions in 1939 reflect the language situation in the O. R. at that time. In the Western district convention English was used exclusively; in the Central district convention most reports were in Swedish, minutes were kept in English, language optional in sessions; in the Eastern district convention Swedish was used exclusively. But English was the official language of the National Convention held in Duluth that year.

In "Ledstjärnan", the paper that O. R. had inherited from the Temperance Association, there was apparently somewhat of a time-lag in the change of language. Already in the thirties there were some complaints that the paper was of little value to the younger generation, since most of them had only a meager knowledge of Swedish. But change was slow because most of the reporters of lodge activities were still of the older generation and preferred Swedish. The paper, to be sure, had been bilingual to some extent for some time, but the real change came about in the decade of the forties — a shift from a predominant use of Swedish to an almost exclusive use of English. The name of the paper was changed to Leading Star in 1946.



RUNEBERG FOLK DANCERS SEATTLE 1950. READING FROM LEFT TO RIGHT: FRONT ROW -- SYRENE STAAF, LOYANN BACON, MELISSA MOUNGER, LOIS JONES, AND GAIL BLOOMQUIST. BACK ROW -- MR. EDWIN STAAF, ACCOMPANIST; GRACE HELGREN, CAROL DENT, VICKI RUOFF, FRANCES MORGAN, GERALDINE ALSKOG AND MR. AUGUST LILLQUIST, DIRECTOR. ALSO DANCING IN THE GROUP ARE JEANINE LAINE, JEAN RAGAN, PATTY RAGAN, LYNNE NEILSON, CAROL JO WILLIAMS, DONNA FABRICK, CAROL ANN RORABACK, RUTH ROACH AND SHARON SCHELLHASE. BOB WILLIAMS IS THE OTHER ACCOMPANIST.

GOALS AND FUNCTIONS —

As mentioned above, the Order of Runeberg combined the goals and functions of its predecessors: work for temperance from one, and mutual aid and benefits in times of illness and death from the other. Temperance work had lost its cutting edge already before the founding of the Order on account of the Prohibition Amendment that went into effect in January 1920. The emphasis on temperance was, to be sure, formally continued in the lodges for a time, but gradually the requirement of teetotalism for membership fell into disuse in accordance with the changing mores of our society. Temperance was no longer a goal.

For a decade or two the aid and benefit program was attractive and very important. But the development of Social Insurance, including medicare, since the middle of the thirties, by industry as well as by the federal government and the states, has almost completely superseded the benefit function of the Order of Runeberg as well as of other lodge organizations. Especially to the younger people the benefit feature does not seem to be of any importance. Most new members of the last few years have chosen the non-benefit grade.

This situation has led to a search for new goals and functions. Though the need for such has been apparent, they do not seem to have been easy to find. One new goal, namely to establish scholarships for young members of the Order, has received considerable support.

It should not be overlooked that one of the most important functions of the early societies and also of the

later lodges was and has been to give their members opportunities for sociability; that is, for contacts and interaction with people of their own kind, backgrounds, and interests. These are human needs even today, and a lodge that is alive can do much to satisfy them.

It is also evident, as will be emphasized in a later paragraph, that the sponsoring of tours of choruses across the Atlantic has become an important function of our Order.

RUNEBERG SINGING SOCIETY —

Brass bands and choruses in the early temperance societies have already been mentioned. Choral singing was later revived in many Runeberg lodges and became an important cultural activity. In the three lodges located in Greater New York choruses were formed at the close of the twenties. A similar development also took place in several lodges in Massachusetts. All these choruses participated in the annual Cultural Festivals of the Eastern district, especially in the early thirties. After a decline followed by reorganization, these choruses were again very active in the Finland Aid campaigns at the close of the decade.

In Berkeley and San Francisco, Calif., choruses also came into being in the twenties, flourished as part of the activities on the Runeberg lodges in the thirties, and sang on the Finland Day programs at the San Francisco Fair in 1939 and 1940. But soon thereafter they became inactive. The lodges in Eureka, Calif., and Coos Bay, Oreg., also had active mixed choruses, especially in the thirties.

Of the greatest and most enduring importance, however, was the founding of choruses in several cities in the state of Washington. On February 11, 1924, representatives from the lodges in Aberdeen, Hoquiam, Olympia, Rochester, and Tacoma organized the Order of Runeberg Singing Society, and on the Labor Day weekend the same year mixed choruses from these lodges met for the first Runeberg Song and Music Festival in Olympia. This festival was highly successful and inspired the founding of mixed choruses soon thereafter in Portland, Oregon, and Seattle and somewhat later in Vancouver, B. C. and other cities. Well attended annual Song and Music Festivals were held till World War II. After a lapse of a few years they were revived by Circle I and have since been arranged regularly up to the present time. It is an often expressed judgment of leaders of lodges in the Northwest that these choruses and festivals have been one of the most important factors in keeping the lodges alive and active. The choruses which have visited Finland have also been made up almost exclusively of singers from these choruses.

Martin Carlson was born in Sweden but emigrated as a young man to Tacoma, Wash. Having studied music and being gifted with a good tenor voice he soon became known among Swedish singers in Tacoma. Here he became director of the Finland-Swedish choir Norden, later named Finlandia, and arranged in 1923 two concerts of the combined choruses in Seattle and Tacoma. He next suggested the organization of the Runeberg Singing Society and was director-in-chief of its festival choruses till 1933, as well director of the chorus on tour in Finland in the summer of 1930.



MARTIN CARLSON

The second Song and Music Festival of the Runeberg Singing Society was held in Olympia in 1925 and the third in Tacoma in 1926. The nature of the Grand Concerts at these festivals is well illustrated by the program for the concert in Tacoma.

GRAND CONCERT

SCOTTISH RITE CATHEDRAL

Sunday, September 5th, 1926, at 4 P.M.

PROGRAM

- 1—a) Star Spangled Banner F. S. Key
- b) Modersmålets sång Hagfors
- c) Vandringsång Felix Korling
- GRAND CHORUS
- 2—Baryton solo. a) När stjärneharen blänker Aug. Korling
- b) Sotargossen A. F. Lindblad
- c) Forgät-mig-er T. Mattei
- PHILIP K. HILLSTROM
- 3—a) Hos oss, Svea G. Wennerberg
- b) Här är landet Hugo Alfven
- c) Engelbrekts marschen Aug. Blanche
- GRAND CHORUS
- 4—Pipe organ solo Selected
- JOHN SUNDSTEN
- 5—Violin solo—Polonaise Wieniawski
- WALTER SUNDSTEN
JOHN SUNDSTEN, Accompanist
- 6—a) Carry Me Back to Old Virginny James Bland
- c) Old Folks at Home C. S. Foster
- GRAND CHORUS
- 7—Baritone solo. a) Der Wanderer Franz Schubert
- b) An Evening Love Song F. E. Chipman
- c) Toreador Song (from Carmen) G. Bizet
- PHILIP K. HILLSTROM
- 8—a) Stridsbön O. Lindblad
- b) Suomis sang A. F. Paccius
- GRAND CHORUS
- 9—Violin solo. a) Aria, for G string Spaulding
- b) Hungarian Dance No. 1 Brahms
- WALTER SUNDSTEN
JOHN SUNDSTEN, Accompanist
- 10—a) Finlands namn Axel von Kothen
- PHILIP K. HILLSTROM, Soloist
- b) America J. C. Macy
- GRAND CHORUS

Martin Carlson, Director of Grand Chorus

EXCURSIONS TO FINLAND —

A very important outgrowth of these singing activities in the Northwest has been a series of Runeberg excursions to Finland, together with a Runeberg chorus. Sentiments for sending a chorus to Finland developed in the Runeberg Singing Society in the latter twenties. Finally a committee consisting of Martin Carlson, Leonard Svedberg and Edward Ahlskog was appointed to organize the undertaking, and in the spring of 1930 the excursion to Finland of a large group, of which the chorus was a part, became a reality. The chorus, with Martin Carlson as leader, made a concert tour among the Swedes in Finland, who greeted the chorus and its concerts with great enthusiasm. A second Runeberg chorus visited Finland in 1956, a third in 1961, and a fourth in 1966 — years in which the great Swedish Song and Music Festivals were held in Åbo, Vasa, and Mariehamn, respectively. The choruses have participated in these festivals in addition to the series of concerts in other places. They have always and everywhere been very warmly received. Except for the first one, Agnes Wiese has been in charge of the tours and John Sundsten has been director in chief of the choruses.

These excursions and choral tours have created among their participants more interest in and understanding of Finland and the Finland-Swedes than any number of lectures or books about the country could have produced. Many have repeated the trip and re-lived its satisfying experiences.

Orden av Runebergs Sångarförbunds Finlands-Kör



Cover design of booklet for program and tour of chorus visiting Finland in 1930.

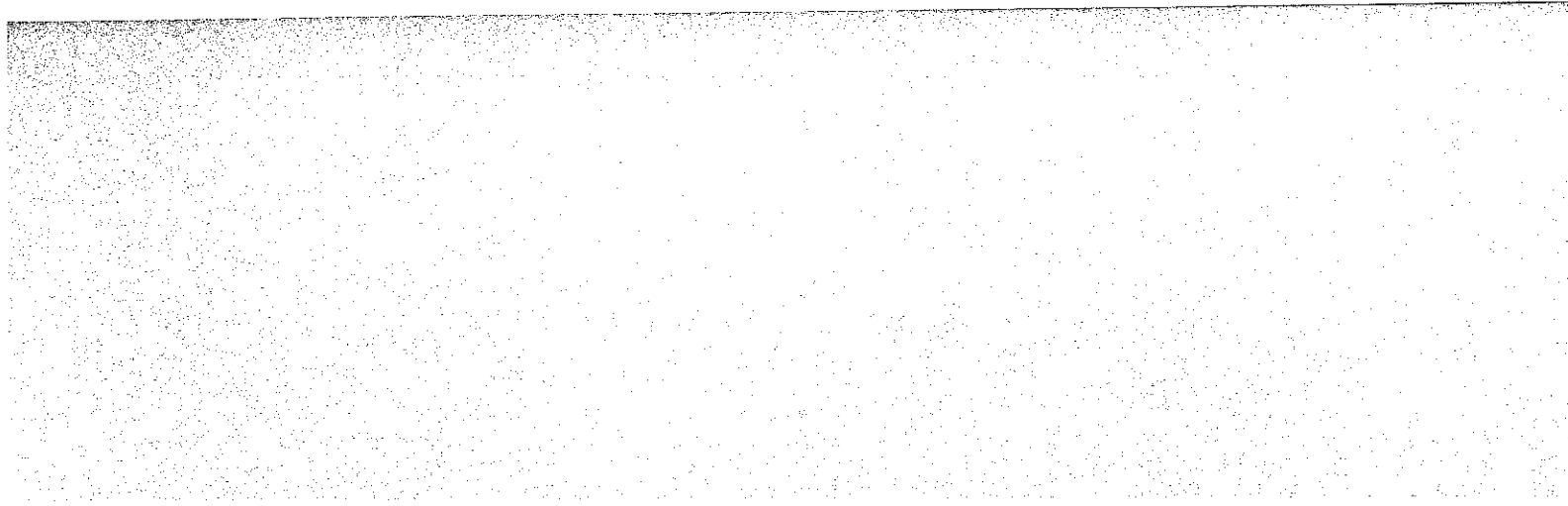
MEMORABILIA



RUNEBERG CHORUS ON TOUR IN FINLAND 1930. FROM LEFT TO RIGHT:
 FRONT ROW: MISS HAZEL MARANDER, MRS. WILLIAM VIAS, MRS. IDA PET-
 TERSON, MISS OLGA MALM, MISS HULDA CARLSON, MISS EMELIA HENDRIK-
 SON, MRS. LEE HOGLUND, MISS WILMA MALM. SECOND ROW: MISS WESTIN,
 MRS. BEN LOVGREN, MISS TYRA MALM, MISS BLANCHE JOHNSON, MRS.
 ESTHER CARLSON, MRS. MARIA MALM, MRS. ANDREW ANDERSON, MISS
 LINNEA GORD. BACK ROW: ARTHUR SODER, ANDREW ANDERSON, ELIS MAT-
 TSON, EMIL JOFS, LEONARD SVEDBERG, FRED CARLSON, ARNOLD KOUTONEN,
 JOHN ERIKSON, VICTOR PETTERSON, ANDREW B. ANDERSON; MARTIN CARL-
 SON, DIRECTOR, IN FRONT.



O. R. CHORUS TO FINLAND 1956.



A SINGING TOUR IN REVERSE —

Under the auspices of the Order of Runeberg a chorus from the Swedish Song and Music Association in Finland visited U. S. and Canada in the summer of 1960. The chorus gave a large number of regular concerts but also sang at many dinners or other informal gatherings in all three districts. Large and appreciative audiences greeted the excellent chorus everywhere. Emil Johnson was director of the chorus and Fritjof Slotte had charge of the tour. The committee from the Order of Runeberg which secured the funds and made all the arrangements on this side of the ocean for this tour consisted of Agnes Wiese (chairman), Ethel Balduf, Ivar Orndahl, U. S. A. Heggblom and Hannes Sutherland.

The sponsoring and planning of such choral tours in both directions has definitely become an important function of our Order, the name of which was changed to International Order of Runeberg in 1962. The excursions, visits and tours of the past few years have greatly strengthened the bonds and increased the understanding and sympathy between the immigrants and their descendants in the U. S. and Canada, on the one hand, and the Swedes in Finland, on the other. It therefore seems highly desirable that such tours and visits should be continued. Plans are now definitely laid on both sides of the Atlantic for another American tour by a chorus from Finland in the summer of 1969. — The lodge Finlandia was formed by members of the chorus that visited America in 1960 after their return to Finland, and it has been associated with the International Order of Runeberg since 1962.

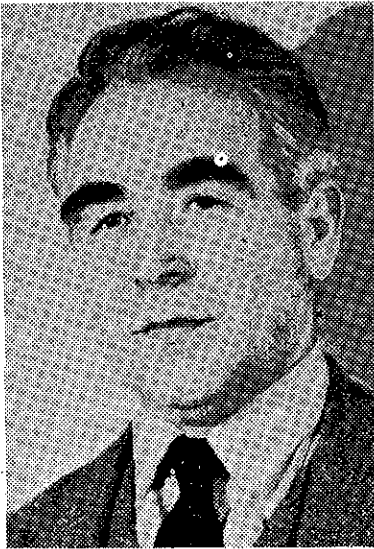


AGNES WIESE

Tour leader of Runeberg excursion choruses to Finland 1956, 1961, and 1966, and chairman of committee which arranged tour of Finland Chorus in U.S. and Canada in 1960 under auspices of Order of Runeberg.



AUGMENTED "AMERICA CHORUS" AT THE CHURCH RUINS IN HAMAR, NORWAY. EMIL JOHNSSON, DIRECTOR, IN CENTER FRONT.



EMIL JOHNSON

EMIL JOHNSON
 Director-in-Chief

Born in Geta Åland, March 10, 1901, now residing in Helsingfors. Has been a teacher of music since 1922. He is the vice-president of the Finland Svenska Sång och Music Förbund. In 1956 the President of Finland honored his outstanding work by awarding him the title of Director of Music.

FRITIOF SLOTTE



FRITIOF SLOTTE
 Tour Leader

Born in Nedervetil, Finland, February 9, 1902. President of Jakobstad's "Sångarbröder" and Peder-söre Sång och Music Förbund. Charter member of Lions Club in Jakobstad.

INTERNATIONAL ORDER OF RUNEBERG EXCURSION CHORUS TO FINLAND 1966.



THE CHORUS PARTICIPATED IN THE GREAT SONG AND MUSIC FESTIVAL IN MARIEHAMN ON THE ALAND ISLANDS AND ALSO GAVE CONCERTS IN HELSINGFORS, BORGA, ÅBO, NÄRPES, VASA, AND JAKOBSTAD. EXTREME RIGHT: JOHN SUNDSTEN, DIRECTOR IN CHIEF. FRONT ROW, FROM LEFT: GEORGE HALVAR, ASSISTANT DIRECTOR; HELEN HAGNES, VIOLINIST; AGNES WIESE, TOUR LEADER.



ARRIVAL AT AIRPORT IN HELSINGFORS OF RUNEBERG EXCURSION AND CHORUS, JUNE 13, 1966.

THE INTERNATIONAL RUNEBERG EXCURSION
CHORUS 1966:

Director: John Sundsten; Assistant Director: George Halvar; Violinist: Helen Hagnes; Basso: Sten Englund; Speaker: Anders Myhrman; Tour Leader: Agnes Wiese.

Sopranos: Maile Streeter, Sylvia Summerland Evelina Holmquist, Anna Mattson, Margaret Jungaro, Mabel Anderson, Ellen Carlson, Greta Holmquist, Helga Mattson, Jacqueline Griffith, Agnes Wiese, Gunnel Ekstam, Agnes Easterly, Valkyria Lund, Lea Sebbas.

Altos: Emma Alskog, Mabel Miller, Dagny Anderson, Helen Olson, Dorothy Bergquist, Esther Conn, Martha Zachman.

Tenors: Edward Ahlskog, George Halvar, Lennart Nygren, George Anderson, Kari Heggblom, Axel Lund, G. A. Landgren, Andrew Fors, Roy Bodeen, John Marander, Alwin Wiese, Arnold Troeh.

Basses: Jacob Backlund, Hugo Johnson, Sten Englund, Edwin Nordman, Elmer Johnson, Oscar Fogde.



John Sundsten, renowned pianist; director in chief of the Runeberg Song Festivals 1933-1967 and of the Excursion Choruses to Finland in 1956, 1961 and 1966; director of the Scandinavian Song and Music Festivals in Seattle; interpreter of Sibelius' musik in the Northwest.

ORDER OF RUNEBERG NATIONAL CONVENTION



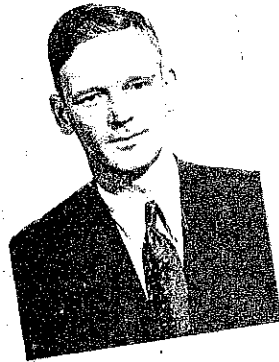
Cover design of programs for National Conventions.

High points in the history of the Order of Runeberg have been the National and District Conventions. After 1925 National Conventions were to be held every fourth year but two intervals had to be prolonged somewhat, one on account of the depression in the thirties and the other on account of World War II. District Conventions have

till recently been held twice as frequently. During the first three decades the National Conventions were attended not only by delegates from the districts and the officials of the Order but usually also by large numbers of visitors. They were in a sense general mobilizations of Runebergers, especially from that part of the country in which the Convention took place. Certain district conventions also drew large numbers.

A few National Conventions seem to have been outstanding in numbers attending, in richness of evening programs, and in the impression they made upon those present. In addition to the usual parade and the business sessions the convention in Berkeley-San Francisco in 1935 presented such evening programs as a Grand Concert by a large chorus made up of singers from a number of lodges, a presentation of the play "Österbottningar", and an exhibit of drill teams from several lodges in action. Outstanding features of the convention in Duluth in 1939 were good evening programs, the large convention banquet with Harold Stassen, the governor of Minnesota, as the speaker, "and probably the largest number of Finland-Swedes ever gathered at the picnic", as one of the leaders wrote later. The convention in Seattle in 1950 drew large numbers from the lodges on the West Coast. Professor Otto Andersson of Åbo, Finland was present as a Guest of Honor and presented in an address before the delegates a program for closer cooperation between the Order of Runeberg and the Swedish cultural organizations in Finland. Governor Langlie of the state of Washington was the banquet speaker.

BERKELEY -- SAN FRANCISCO
**NATIONAL CONVENTION
 COMMITTEE**



GEORGE NEWMAN
 TREASURER



JOHN MATSON
 VICE PRES.



EMIL FORSMAN
 TREASURER



OLIVE MATTSON



GEORGE SUNDELL
 PRESIDENT



ELSIE VUREK
 SECRETARY



OTTO TAST



ARVID JOHNSON



WALFRID HOLM



GUST LOWLAND

INTERNATIONAL ORDER OF RUNEBERG

MEMORABILIA

Southern Circle
CONCERT
By
UNITED RUNEBERG CHORUSES
At
Veterans War Memorial Auditorium
SAN FRANCISCO

Friday Evening, August 30th, 8:30 o'Clock

WALTRID HOLM, Chairman
Frances Anderson, Soprano Evelyn Ramberg, Pianist-Accompanist
William Wegman, Violinist Philip K. Hillstrom, Dirigent

PROGRAM

Group 1	Modersmålets Sång	Hagfors
	Vasanamnet	Kothen
	Vandringssång	Korling
	Chorus	
Group 2	Etudes Symphoniques	Schumann
	Evelyn Ramberg	
Group 3	Care Selve	Handel
	Caro Nome (from Rigoletto)	Verdi
	Frances Anderson	
Group 4	Suomis Sång	Pacius
	Dear Land of Home (from Finlandia)	Sibelius
	Carry Me Back to Old Virginny	Bland
	Chorus	
Group 5	Romance	Wieniakski
	Minuet	Beethoven
	Liebesfreud	Kreisler
	William Wegman Henrik Gjerdrum at the Piano	
Group 6	Vaggsång (Cradle Song)	Brahms
	Spinn Spinn	Swedish Folksong
	När Jag Blev Sjutton År (When I Was Seventeen)	Swedish Folksong
	Frances Anderson	
Group 7	Pilgrim Chorus	Wagner
	The Star Spangled Banner	Francis Scott Keyes
	Chorus	

ORDER OF RUNEBERG NATIONAL CONVENTION DULUTH, MINN., AUGUST
9-13, 1935.

SONG *of* WELCOME

Melody: "Vårt Land"



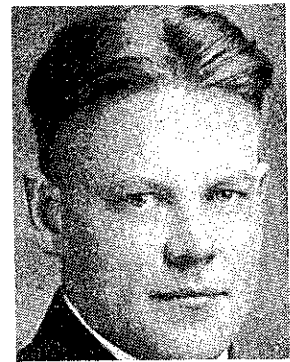
MRS. WALDEMAR JOHNSON
CHAIRMAN OF PROGRAM
COMMITTEE

Hail, sons of Runeberg, our hail
To all from near and far!
Of open hearts yourself avail,
Our friendliness shall never fail
At "Zenith City," where we are
In state of Northern Star.

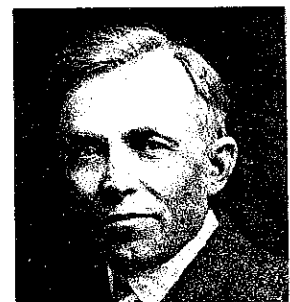
Welcome, ye daughters fair and neat
To city of good will!
Where purest air and waters meet,
And roses bloom, peonies sweet
Bedecking every aged hill,
Where sunshine bathes them still.

We welcome all with one acclaim
Our joys with us to share.—
And Runeberg, that glorious name,
Long may it live on wings of fame,
And may we hold it ever dear
Both here and everywhere!

CARL J. SILFVERSTEN.



WALDEMAR V. JOHNSON
PRESIDENT, LODGE NO. 21



WILLIAM HOLM
TREASURER OF
ORDER OF RUNEBERG

Duluth, Minnesota, 1939.
NATIONAL CONVENTION COMMITTEE



A. J. SUNDQUIST
Chairman



MRS. MARGARET SIMONSON
Secretary



HENRY CARLSON
Treasurer



MRS. ESTER CARLSON
Assistant Secretary

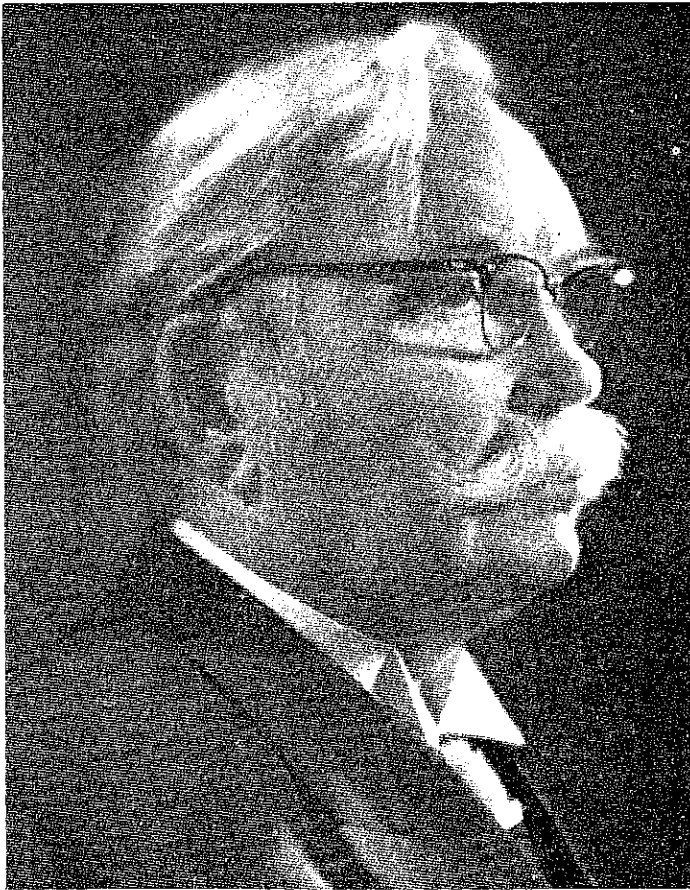


SIGURD BACKSTROM
Assistant Chairman



J. A. BROMAN
Assistant Treasurer

NATIONAL CONVENTION, SEATTLE, WASH., 1950.



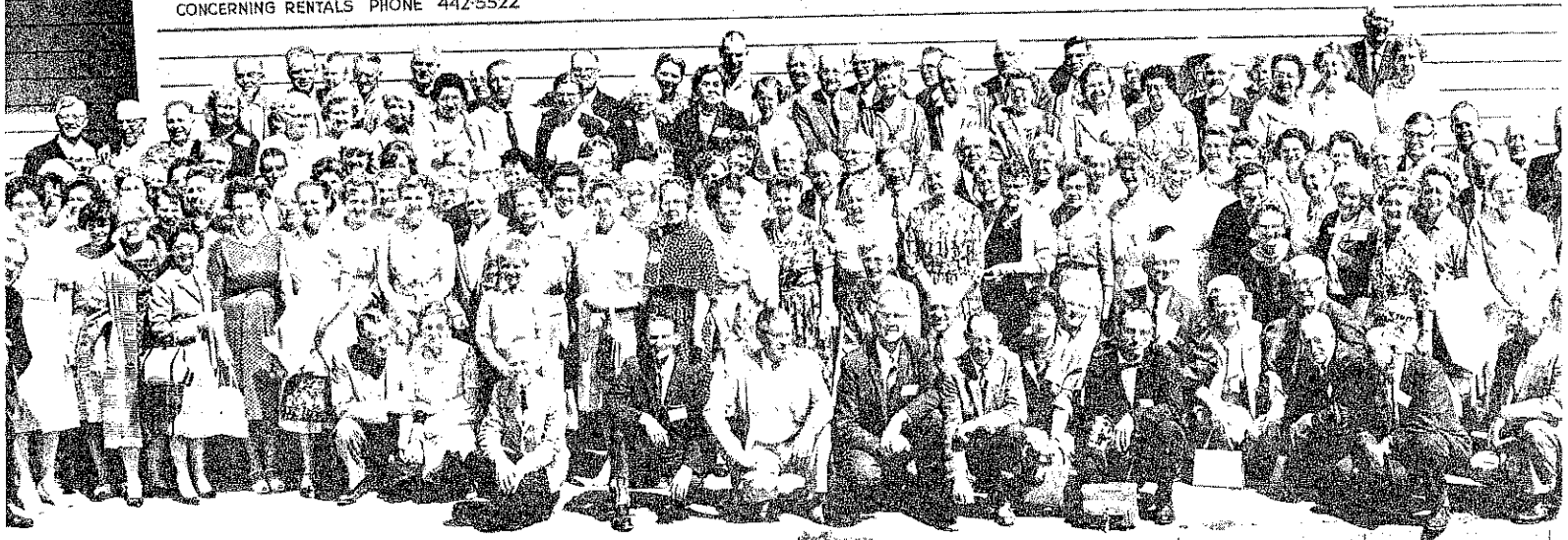
AXEL E. STROM
CONVENTION CHAIRMAN



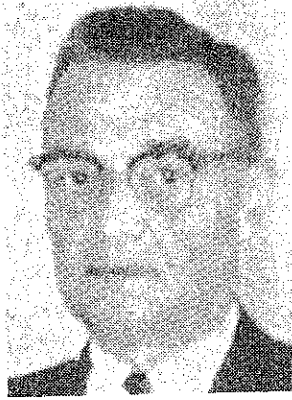
GEORGE E. HALVAR
PRESIDENT
SEATTLE LODGE

Professor Otto Andersson of Åbo, Finland, was Guest of Honor at the National Convention in Seattle, Wash., in 1950 and outlined before the delegates a program for new contacts and closer cooperation between the Order of Runeberg and the Swedish cultural organizations in Finland.

RUNEBERG HALL
CONCERNING RENTALS PHONE 442-5522



SUPREME LODGE OFFICERS



CARL O. GUSTAFSON
Past President & Chairman of Trustees



U. S. A. HEGGBLOM
President

National Convention in Dollar Bay, Michigan, 1966



GUNNAR JOHNSON
Trustee



Mrs. ILINE ATCHISON
Secretary & Editor



ERIC T. SODERLUND
Trustee



Mrs. RAE V. WINGER
Treasurer



ROY W. KOPING
Board Member

MEMORABILIA



NATIONAL CONVENTION DOLLAR BAY, MICH., 1966

OFFICERS OF OUR ORDER —

A large number of men and women have since 1920 spent freely of their time and energy in the work of the lodges. A considerable number have also over the years served as officers in their respective districts. However, space does not permit an enumeration of all of these at this time. Only a list of national officers of our Order and the years they have served is therefore given.

PRESIDENTS: John A. Forsman 1920-1922, Alex Koll 1922-1925, Walter Ekholm 1925-1929, Alex Johnson 1929-1933, Edward Mattson 1933-1935, Emil Backman 1935-1939, Albert Rusk 1939-1946, Carl L. Helgren 1946-1950, Gunnar Johnson 1950-1954, Carl O. Gustafson 1954-1958, Hannes Sutherland 1958-1963, U. S. A. Heggblom 1963-1966, Roy W. Koping 1966-. Since 1939 each retiring president has been elected "past president". More recently this officer has served as chairman of the trustees.

VICE PRESIDENTS: Emil Ekblad 1920-1922, Walter Ekholm 1922-1925, F. A. Spolander 1925-1929, Edward Mattson 1929-1933, Ivar Hokans 1933-1935, Sigurd A. Peterson 1935-1939, Oscar Anderson 1939-1946, Arvid Johnson 1946-1950, Ethel (Johnson) Balduf 1950-1958, U. S. A. Heggblom 1958-1963, Lennart A. Nygren 1966-

TREASURERS: J. Victor Jacobson 1920-1925, Frank Stoor 1925-1935, William Holm 1935-1946, Carl O. Gustafson 1946-1954, John Bergman 1954-1962, Rae V. Winger 1962-.

SECRETARIES: John S. Back 1920-1922, John Warnstrom 1922-1925.

EDITOR OF "LEDSTJÄRNAN": John E. Smith 1920-1925.

COMBINED SECRETARY AND EDITOR: J. Victor Jacobson 1925-1950, Carl L. Helgren 1950-1963, Iline Atchison 1963-.

TRUSTEES: Among the many trustees John Beck of Baraga, Mich., and J. Victor Carlson of Worcester, Mass., served the longest time — each 21 years.

In 1962 Anders M. Myhrman was appointed historian of the Order. He has since authored a booklet with the title *The Finland-Swedes and Their Cultural Organizations in America*, which was published by the Order in 1964. A revised edition of the booklet in Swedish with the title *Finlandssvenska Immigranter i Amerika* was included as a chapter in a larger publication by the Swedish Literature Society in Helsingfors in 1966.

INTERNATIONAL ORDER OF RUNEBERG

PAST PRESIDENTS OF THE INTERNATIONAL ORDER OF RUNEBERG,
WITH DATE OF ASSUMPTION OF OFFICE.



J. A. FORSMAN
1920



A. KOLL
1922



W. EKHOLM
1925



A. JOHNSON
1929



E. MATTSON
1933



E. BACKMAN
1935



A. RUSK
1939



C. L. HELGREN
1946



G. JOHNSON
1950



C. O. GUSTAFSON
1954



H. SUTHERLAND
1958



U. S. A.
HEGGBLOM
1963

SOME VICE PRESIDENTS AND TRUSTEES FROM DIFFERENT PERIODS.



I. HOKANS
Vice President



J. A. JOHNSON
Vice President



O. ANDERSON
Vice President



A. H. JOHNSON
Trustee



J. V. CARLSON
Trustee



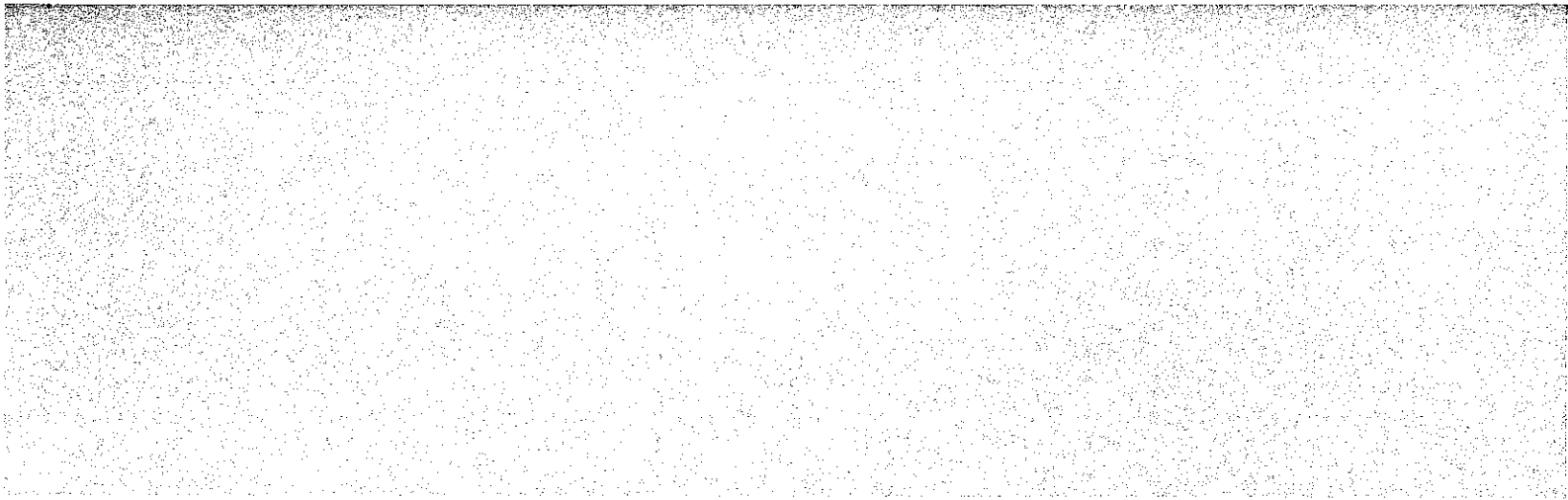
J. BECK
Trustee



V. GUSTAFSON
Trustee



E. AHLKOG
Trustee



INTERNATIONAL ORDER OF RUNEBERG



INTERNATIONAL ORDER OF RUNEBERG SUPREME BOARD OFFICERS ELECTED 1966. FRONT ROW, FROM LEFT: MRS. ETHEL A. BALDUF, TRUSTEE; ROY W. KOPING, PRESIDENT; MRS. ILINE ATCHISON, SECRETARY AND EDITOR OF LEADING STAR; MRS. RAE V. WINGER, TREASURER. SECOND ROW, FROM LEFT: U. S. A. HEGGBLOM, PAST PRESIDENT AND CHAIRMAN OF TRUSTEES; LENNART A. NYGREN, 1ST VICE PRESIDENT; TED HOLMES, 2ND VICE PRESIDENT AND TRUSTEE.

CENTRAL DISTRICT

OFFICERS: president, Russell Griffiths, Chicago, Illinois; past president, Lydia Holmes, Dollar Bay, Michigan; vice president, Emil Martinson, Conover, Wisconsin;

secretary, Mrs. Myrtle M. Johnson, Anvil Location, Michigan; treasurer, Alfred L. Majors, Muskegon, Michigan.

LODGE NO. 1 — BESSEMER, MICHIGAN

HISTORY: John Thors from Solf took the initiative for the founding of the Aid and Beneficial society "Österbotten" in 1898 — the first of its kind among the Finland-Swedish immigrants in the Central states. By 1904 it had attained a membership of about 100. The temperance society "Nord" was also organized some months later in 1904 with 16 charter members. The two societies united in 1920 to form lodge No. 1 of the Order of Runeberg, with 99 members. The biggest event in the history of the lodge was the 40th Anniversary celebration in 1938, with many visitors from other lodges in northern Michigan participating. Three charter members (since 1898) were present and were especially honored: Alfred Erickson, Victor Jacobson and John Thors. The lodge has had its own hall and has been host to district conventions and picnics. For a time the lodge also had its own dance band and a folk-dance team. The membership was 115 in 1929, 294 in 1940, and is now 60.

John Bergman is past president. Albert Eastman was

financial secretary 1924-1942, and has been president from 1942 to the present. Carl Anderson was financial secretary 1942-1947, Elmer Erickson 1947-1951, and Melvin Jacobson has served in that office since 1951.

OFFICERS OF THE LODGE (in photo): Top row, from left — John F. Bergman, rec. sec'y; Albert Eastman, president; Melvin Jacobson, fin. sec'y; Carl O. Anderson, treasurer; lower row, from left — Mrs. Hilda Erickson, Mrs. Myrtle Johnson, Mrs. Ailie I. Bergman, trustees.

Name and Birthplace of Members: (Fd stands for Finland and Mich. is omitted after Bessemer.) Arvid Anderson, Bessemer; Carl Anderson, Bessemer; Edward Anderson, Esse, Fd; Helga Anderson, Sweden; Ellen Anderson, Kvevlax, Fd; Mary Anderson, Vörå, Fd; Aali Arpi, Fd; Lydia Arpi, Fd; Ailie I. Bergman, Wardner, Ida.; John Bergman, Ironwood, Mich.; Hilda Bjork, Ironwood, Mich.; Elizabeth Carlson, Vörå, Fd; Charles East, Maxmo, Fd; Albert Eastman, Pedersöre, Fd; Arthur Erickson, Bessemer; Elmer Erickson, Bessemer; Elizabeth Erickson, Vörå, Fd; Emil Erickson, Vörå, Fd; Hilda Erickson, Ashland,

MEMORABILIA



OFFICERS LODGE NO. 1, BESSEMER, MICH.

Wis.; Sigfrid Erickson, Ramsay, Mich.; Syma Erickson, Wakefield, Mich.; Anna Fahler, Maxmo, Fd.; Iver Hakala, Fd.; Charles Hietanen, Fd.; Anna Holmquist, Vörrå, Fd.; Arvid Holmquist, Ramsay, Mich.; Ina Jacobson, Bessemer; Edith Jacobson, Bessemer; Melvin Jacobson, Bessemer; Shirley Jacobson, Ramsay, Mich.; Kathy Jacobson, Wakefield, Mich.; LeRoy Jacobson, Wakefield, Mich.; Esther Johnson, Bessemer; Edwin Johnson, Marinette, Wis; Myrtle Johnson, Bessemer; Sharon J. Rickard, Bessemer; Alina Kahara, Fd.; John Korpi, Ironwood, Mich.; Thyra Korpi, Ironwood, Mich.; John Kyrola, Fd.; Ida Laitala, Fd.; John Lind, Fd.; Taimi Lind, Fd.; Emma Lundin, Fd.; Anna Marander, Bessemer, Anton Marander, Korschholm, Fd.; August Nyland, Pedersöre, Fd.; Ida Nylund, Bessemer; Anna Nyman, Italy; Armas Nurmi, Fd.; Irene Olin, Terjärv, Fd.; Edith Rule, Bessemer; Thomas Rule, Nagaunee, Mich.; Onni Ruusula, Fd.; Jennie Swanson, Ironwood, Mich.; Esther Stephens, Bessemer; John Thors, Bessemer; Anna Thors, Bessemer; Hilda Ulvinen, Fd.; Arthur Wahlberg, Ramsay, Mich.

LODGE NO. 2 — IRONWOOD, MICHIGAN

The first organization among our immigrants in Ironwood was the temperance society "Österbotten", which was founded in 1898. A sewing society was active from the beginning, a hall was built for meetings, and a small orchestra and a male chorus are mentioned. The benefit society "Kronan" was founded only a year after Österbotten. These societies were active in their respective fields, cooperated in festivities, gained many members,

and merged to become lodge No. 2 OR on Jan. 1, 1921, with 309 members. This lodge was active with regular meetings and many festive occasions over three decades. The membership in 1929 was 434 — the highest in any lodge at that time, and 340 in 1940. Since 1950 the membership has decreased rapidly and is now only 46. Runeberg hall was sold about ten years ago and activities have since then been at a minimum.

The reason for the decline in numbers and activities is the fact that the community (a mining town) has been declining and the young people with any education have had to leave for larger cities to find suitable work.

Officers 1967; president, Victor R. West; vice president, Gust Holm; record. sec'y, Mrs. W. Peterson; fin. sec'y, J. I. Johnson; treasurer, Elmer Liljequist; marshal, William Peterson.

Membership list —

Name and birthplace of members born in Finland: Mrs. Anna Anderson, Jeppo; John Anderson, Närpes; Mrs. Wm. Anderson, Pedersöre; Arvid Björkquist, Vörrå; Emma Erickson, Kronoby; Mary Erickson, Kvevlax; Anna Holm, Närpes; Gust Holm, Bergö; Mrs. G. Holm, Vasa; Andrew Johnson, Purmo; Irene Liljequist, Jeppo; Walter Mattson, Bergö; Selma Nyland, Kronoby; Mrs. Irene Nyman, (?); William Peterson, Pedersöre; Mrs. Wm. Peterson, Jeppo; Ellen Swanbeck, Jeppo; Victor R. West, Bergö; Edna Wick, Maxmo; Ed Wickman, Pedersöre; Lydia Winquist, Kimito.



MORGONSTJARNAN NO. 1. IRONWOOD, MICH.
FIRST SOCIETY IN TEMPERANCE ASSOCIATION.
FORERUNNER of LODGE NO. 2 OR.

Members born in Ironwood, Mich.: Emily Anderson, Mrs. Gertrude Anderson, Mrs. John Anderson, Elsie Carlborn, Mrs. Harvey Carlson; Charles Eckrose, J. I. Johnson, William Johnson, Elmer Liljequist, Carl Lindquist, Mrs. Water Mattson, Anna Rhenlund, Esther Rhenlund, Linnea Tankka, Mrs. V. West, Mrs. Ed West, Hugo Wickman, Thure Wickman.

Members born in other places: Evar Anderson, Escanaba, Mich.; Walfred Anderson, Iron Belt, Wis.; Oscar Berg, Sweden; Anna Eklund, Metropolitan, Mich.; Anna Oman, Värmland, Sweden; Herbert Strand, B. C., Canada; Mrs. Thure Wickman, London, Ontario.

LODGE NO. 4 — CRYSTAL FALLS, MICHIGAN

HISTORY — The forerunners of Lodge No. 4 were the temperance society "Stjärnan i Hemmet" founded in 1899 with 19 members and the benefit society "Nordstjärnan" founded the following year. The temperance society had 92 members at one time and was very active. The benefit society was host to the convention of the Benefit Association in 1911 and had a membership of 169 in 1920. At the end of that year the two societies merged to form lodge No. 4, OR, in which the membership rose to 277 in 1929. The lodge was most active in the twenties and thirties. In addition to the monthly meetings there were special festivities at certain holidays — and always a Runebergfest early in February. The first talk on Runeberg in English was given in 1935 by Edward Forsman. About that time a shift was made from Swedish to Eng-

lish in the meetings of the lodge. There were 183 members in 1940, but since then both activities and membership have declined. Among the more prominent early members were Andrew Ostrand, Frank Stoor, and August Lithen.

Officers 1966-1967 — past president, Alfred Groop; president, Wayne Kautiainen; fin. sec'y, Gladys Johnson; record. sec'y, Myrtle Sulasalmi; treasurer, Ruth Kautiainen.

Membership list —

Name and birthplace of members from Finland: Isaac Anderson, Vörå; Bertha S. Anderson, Vasa; Walter Blomberg, Helsingfors; Amanda Carlson, Malax; Edla Dahl, Vasa; Hilda Enstrom, Vasa; John Forslund, Vörå; Alfred Groop (past pres.), Vasa; Ida Groop, Oravais; Maria Hagglund, Vörå; Anton Johnson, Pedersöre; Alice Johnson, Åbo; Anna Johnson, Nykarleby; Lempi Juhola, Nurmo; Hilma Lampi, Merikarvia; Aina Lithen, Esbo; Minnie Maki, Lihtimäki; Amanda Mattson, Vasa; Maria Morton, Alajärvi; Elizabeth Niemi, Evijärvi; Aline Nyholm, Åland; Oscar Peltola, Vasa Län; Katarina Pesonen, Åland; Erick Raben, Korsholm; Sofia Skur, Vasa; Loviisa Tikkala, Finland.

Members born in Crystal Falls, Michigan: Emilia Anderson, Leonard Anderson, Lilly Broman, Gladys Johnson (fin. sec'y 9 years), Ruth Kautiainen, Wayne Kautiainen, Sigurd Martinson, Hilma Nelson, Jennie Shober, Elsie Shogren, John Soderman, Walter Sulasalmi, Myrtle Sulasalmi.

LODGE NO. 6 — EVELETH, MINN.

HISTORY — The temperance society "Runeberg" was organized in Eveleth in 1898 by Ed Smith, who later became mining inspector in St. Louis County. This society was very active during its first ten years: soon it had its own brass band and choir, built a hall and recruited about 100 members. In 1903 the benefit society "Nordstjärnan" (North Star) was founded. The first officers were: president, Herman Holm; vice pres., August Isackson; rec. sec'y, John Erickson; fin. sec'y, Andrew Roos; **treas.**, Herman Martinson. These two societies united in 1920 to form lodge No. 6, OR which for many years was very active with regular meetings and occasional festivities. Anniversaries of the lodge — 25, 35, 40, 50 and 60 years — have been marked by special celebrations, especially the 50th, which was held in the city auditorium in 1935. Minnie Martinson was then president. The lodge was host to the Central District convention in 1939. Axel Wicklund was then president. Israel Ohman was a diligent correspondent for the lodge for many years. The membership was 137 in 1929, 128 in 1940 and is now 42.

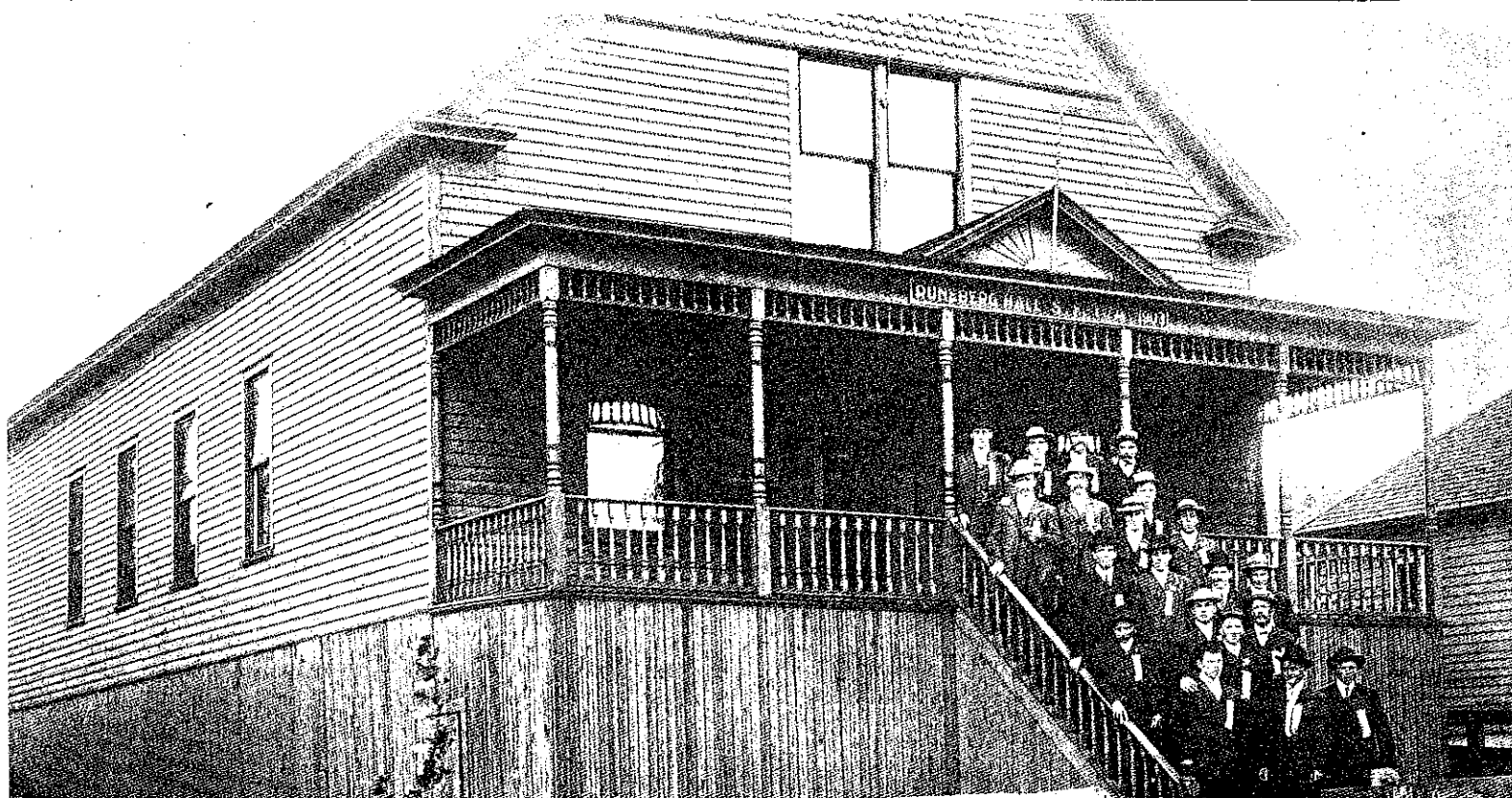
Membership of Lodge No. 6 —

Name and birthplace of members from Finland: Mrs. Anna Damsten, Maxmo; Mrs. Edith Berts (Carlson), (?); Erick Bertholm, Kaskö; Mrs. Emmy Bjork, Terjärv; Mrs. Selma I. Dahl, Övermark; Fred Elg (fin. sec'y 11 years), Vasa; Verner Elg, Vasa; Mrs. Hilda Erickson, Kvevlax; Ed Erickson, Vörå; Mrs. Elizabeth Erickson, Kvevlax;

Matt Erickson, Vörå; Fred Fredson, Närpes; Mrs. Elizabeth Hedman, Oravais; Mrs. Johanna Kruse, Vörå; John A. Kruse, Kvevlax; Mrs. Hilda E. Kruse, Kvevlax; Mrs. Johanna Lind, Vörå; Mrs. Ida M. Lind, Oravais; Mrs. Alina Lofdahl, Malax; Mrs. Minnie Martinson (president 15 years), Munsala; Mrs. Ida Martinson, Kvevlax; August Nyfors, Kvevlax; Mrs. Hanna Nyfors, Kvevlax; Mrs. Signe S. Nygard, Kvevlax; Mrs. Elvira Pagliarini, Kvevlax; Hugo E. Roos, Vörå; Arvid Westin, Maxmo; Mrs. Ida J. Westin, Vörå; Axel Wicklund (treasurer 9 years), Maxmo.

Members born in other places as given: Mrs. Linnea Bergman, Branford, Conn.; Mrs. Ellen DeRubus, Eveleth, Minn.; Mrs. Fred Elg, Eveleth, Minn.; Mrs. Verner Elg, Motala, Sweden; Mrs. Irene M. Fant (rec. sec'y 27 years), Eveleth, Minn.; Evald Franks, Grand Marais, Mich.; Mrs. Impie Johnson, Eveleth, Minn.; Wallace E. Johnson, Eveleth, Minn.; Leonard Kruse, Eveleth, Minn.; E. Verner Lofdahl, Morris Run, Pa.; Harry Pagliarini, Sassferato, Italy; Mrs. Ann G. Stienle, Eveleth, Minn.; Mrs. Ina C. Wingard, Eveleth, Minn.





RUNEBERG HALL, EVELETH, MINN. ONE OF THE EARLIEST HALLS — BUILT 1903.



RUNE BERG BAND, EVELETH, MINN., 1905.



Officers of Lodge No. 6 for 1967. First row, left to right: Minnie Martinson, president; Irene Fant, rec. sec'y; Eleanor Elg, marshal; Elvira Paglianini, outside guard. Back row from left to right: Evald Franks, vice presi-

dent; Axel Wicklund, treasurer; Fred Elg, fin. sec'y; Verner Elg, trustee; and Fred Fredson, trustee. Absent from picture: Anna Damsten, inside guard; and Alfred Kruse, trustee.